



DW30 by

SPECFLUE

...designed to be better

Specflue DW30

Product information

Specflue DW30 has been specifically designed to meet the requirements of today's clean burning multi-fuel appliances. The system provides an economical and robust twin wall insulated stainless steel chimney system offering high material specification, design, manufacturing quality, thermal performance and ease of installation. It is suitable for negative draught conditions where the maximum continuous flue gas temperature does not exceed 600°C and is soot fire rated at 1000°C.

Specflue DW30 is available in 130 and 150mm internal diameters and consists of adaptors, lengths, fittings, supports and firestop components. Each chimney element is fabricated with a fully welded 316L stainless steel inner liner and a stainless steel outer case. It is also available in a Matt Black finish as indicated by the MB suffix on the part number. The 30mm annulus between the two walls is insulated with a high thermal performance pressure injected or pipe section mineral wool to a mean density of 170-190kg/m³. The jointing system is a simple push fit male and female joint with the male end pointing upwards. The 70mm of engagement offers a strong structural joint with the locking band provided.

Specflue DW30 is designed to be used both internally and externally as a fully supported structure, and must be installed in accordance with National and Local Building Regulations and Standards.

Approvals

Specflue DW30 is tested, approved and CE marked to BS EN 1856-1:

T600 N1 D V2 L50050 G60 60mm distance to combustibles in a combustible shaft	T600 N1 D V2 L50050 G50 50mm distance to non-combustibles in a non-combustible shaft
---	---

CE Certificate No. 0432-CPR-00593-01

Chimney Diameter

Internal diameter	Outside diameter
130mm	190mm
150mm	210mm

The chimney diameter size should be as recommended by the appliance manufacturer and in accordance with current building regulations.

Warranty

Specflue DW30 carries a 25 years conditional warranty.

General Design Considerations

Chimney Diameter/Height

The internal diameter of the chimney must conform to the requirements of the heating appliance manufacturer's instructions, and should not, under any circumstance, be less than the appliance outlet. The height of the chimney will depend on the building structure, however it is recommended that not less than 4.5 metres should be considered the minimum chimney height from the appliance to termination for solid fuel applications. For further clarification refer to Document J of the DOE Building Regulations, Section F of the Building Standards (Scotland) and Section L of the Building Regulations (Northern Ireland).

Chimney Route

The chimney system should remain as straight as possible through its vertical run but should it be necessary to offset the chimney there should be no more than 4 changes of direction of a maximum 45°. It is also recommended that a vertical rise of 600mm should be allowed immediately above the appliance before any change of direction.

Chimney Support

The chimney must be adequately supported throughout its length and the Specflue DW30 product offers a range of lateral and vertical support components to undertake the safe installation of the chimney system.

Provision for Sweeping and Cleaning

Adequate provision should be made for inspecting and cleaning the chimney system. This is particularly important for solid fuel applications. Specflue recommends that chimneys are swept at least once a year. At the time of sweeping it is important that a visual inspection of the flue is undertaken.

Combustion Air Requirements

All heating appliances need combustion air to work efficiently and safely. It is essential that the appropriate permanent air supply, as required by the appliance manufacturer and Building Regulations is provided into the room where the appliance is situated. Always refer to the appliance manufacturer's recommendations and Building Regulations before installation.

Floor Penetration Components

Where the Specflue DW30 product is used on solid fuel or oil appliances and the flue gas temperature exceeds 250°C, the clearance at floor/ceiling void must be established using the ventilated support plate and ventilated fire shield, ensuring that no joints are made within the ceiling void. A magnetic fire shield cover is also available used in conjunction with the ventilated fire shield to improve aesthetics.

When connecting to a single wall flue pipe, Specflue DW30 must project below the appliance room ceiling by a minimum of 425mm before a connection is made. All support components offer a 60mm clearance to combustible material that must be maintained at all times.

Appliance Connection and Condensate Removal

The Specflue DW30 adaptor should be used to facilitate connection from the appliance to the chimney. It is recommended that the joint between the adaptor and the appliance/flue pipe is securely caulked and sealed with fibre rope/tape and fire sealant. Any flue pipe connection to the chimney must be made in the same room. Condensation removal should be determined by each individual application. The system must be designed to facilitate future appliance removal.

Note: In the UK, connection to an appliance which is not connected to the fuel supply, may be carried out by a competent person. However, connection to an appliance connected to the fuel supply must be carried out by an approved and registered Heating Engineer, e.g. Gas Safe, HETAS (solid fuel) or OFTEC (oil).

Adjustable Pipes

The Adjustable Pipe consists of two sections which telescope together. Both sections are insulated, and the component is supplied with additional insulation, which will need to be added to the annulus on site depending on the desired finished length. The overlapping section should be secured with self drilling screws. Each end of the adjustable pipe is secured with locking bands in the normal manner. The adjustable pipe does not load bear so always use a wall support or a support plate immediately above this component when vertically applied.

Handling

The product is relatively easy to handle, but care should be taken when holding, fitting or assembling any part of the system. Users are advised to wear gloves to avoid injury or any sharp exposed edges.

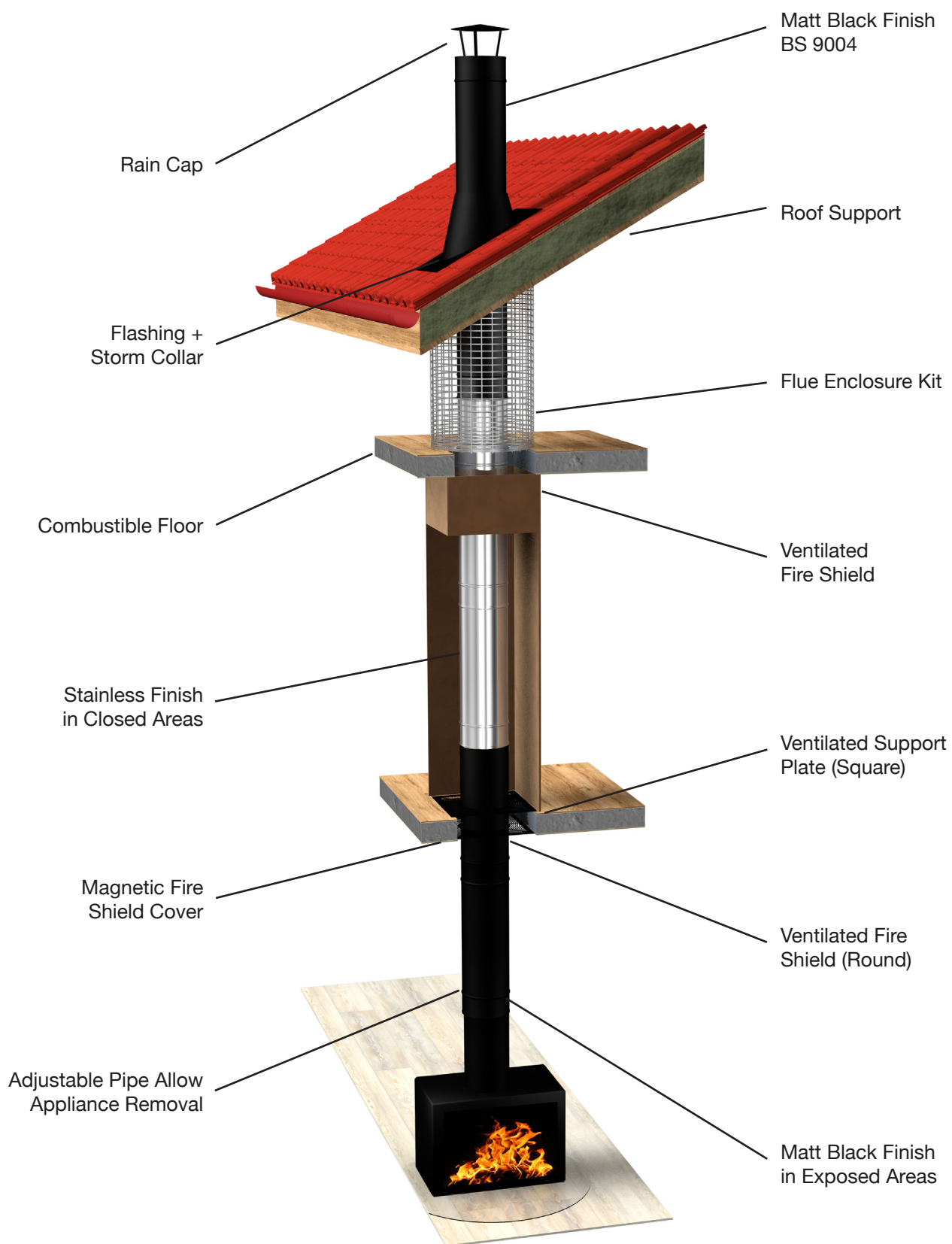
Data Plate

It is a regulatory requirement that a data plate is to be completed, positioned and secured by the installer where a hearth, fireplace, flue or chimney is provided or extended. The data plate provides essential information regarding the performance, specification, designation and installation of the chimney system. The data plate is to be completed by the installer using an indelible ink and securely fixed in an unobtrusive but obvious position. Acceptable fixing positions would be next to the electricity consumer unit, water supply stop cock or by the hearth.

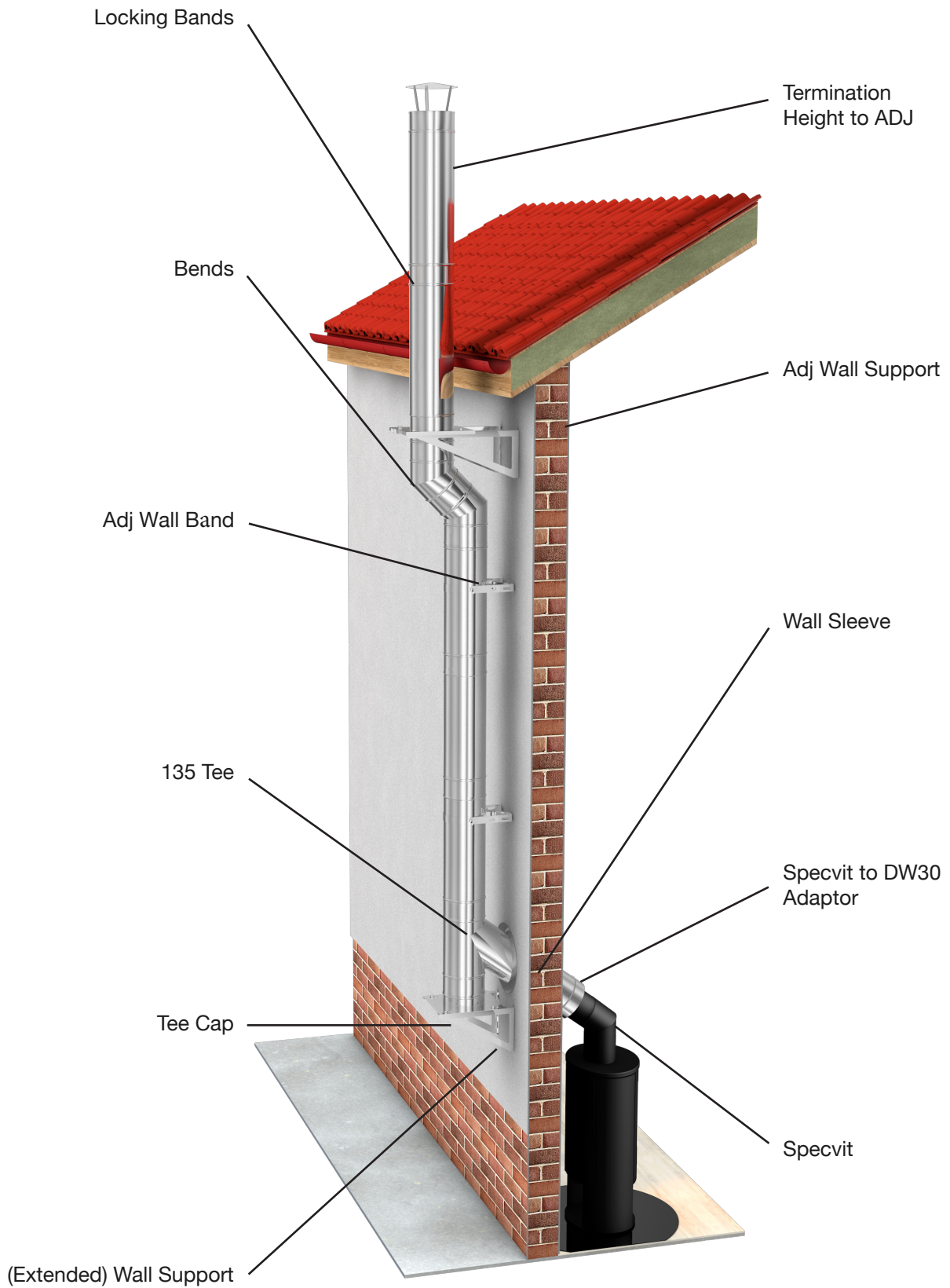
Carbon Monoxide Alarm

Approved Document J of the Building Regulations (Section 2.34) state that all new and replacement solid fuel appliances must be fitted with an approved carbon monoxide alarm.

Internal Installation Diagram



External Installation Diagram



Starting Components

Starting Adaptor

Used to connect DW30 to an appliance socket and/or connecting pipe.

Part No	A	B	L
0105094	130	190	124
0105094MB	130	190	124

Increasing Adaptor

Used to connect DW30 to an appliance socket and/or connecting pipe, increasing up in diameter.

Part No	A	B	L
105097	130	190	99
0105097MB	130	190	99
0106097	150	210	124
0106097MB	150	210	124

Specvit to DW30 Adaptor

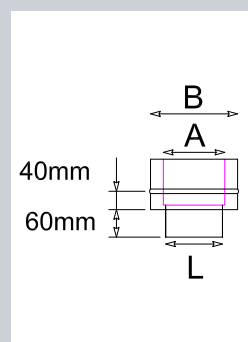
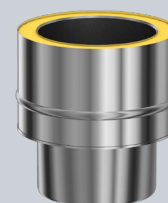
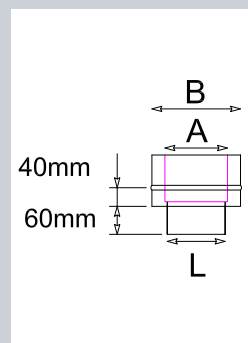
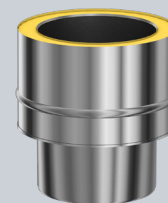
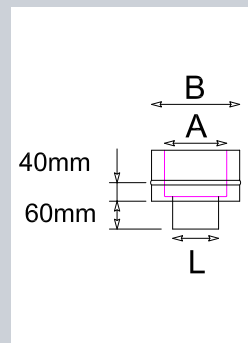
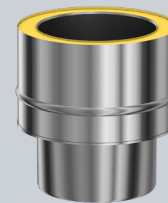
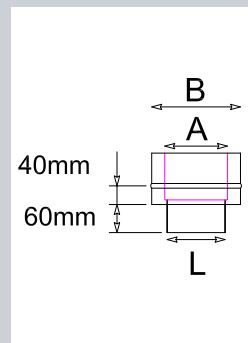
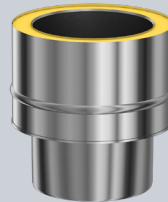
Used to connect DW30 to Specvit connecting pipe and/or an appliance socket.

Part No	A	B	L
0106098	130	190	151
0106098MB	130	190	151

Prima Smooth to DW30 Adaptor

Used to connect DW30 to Prima Smooth connecting pipe and/or an appliance socket.

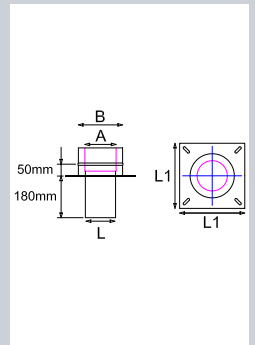
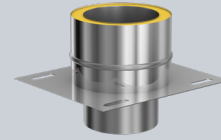
Part No	A	B	L
0105099	130	190	149
0106099MB	130	190	149



Anchor Plate

Used to connect DW30 to a raft lintel. Can also be used at the top of an existing chimney stack where the termination section has been removed. DW30 flue components will sit on brickwork and multifuel flexible liner (155mm only) fits below. Secured to the top of the stack by suitable fixings.

Part No	A	B	L	L1
0105089	130	190	280	130
0105089MB	130	190	280	130
0106089	150	210	300	150
0106089MB	150	210	300	150

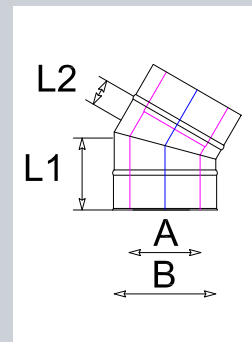


Bends

30 Degree Bend

Provides a change of direction within the system. Angle measured from the vertical. See table on page 19 for offset data.

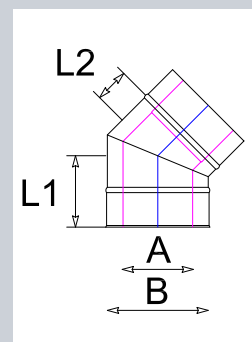
Part No	A	B	L1	L2
0105023	130	190	120	50
0105023MB	130	190	120	50
0106023	150	210	123	53
0106023MB	150	210	123	53



45 Degree Bend

Provides a change of direction within the system. Angle measured from the vertical. See table on page 19 for offset data.

Part No	A	B	L1	L2
0105022	130	190	134	64
0105022MB	130	190	134	64
0106022	150	210	138	68
0106022MB	150	210	138	68



Lengths

Pipe (Installed)

Straight pipe length – installed length of 80/180/430/930mm. Actual component is 70mm longer than installed length.

80mm Pipe (Installed)

Part No	A	B	L
0105006	130	190	80
0105006MB	130	190	80
0106006	150	210	80
0106006MB	150	210	80

180mm Pipe (Installed)

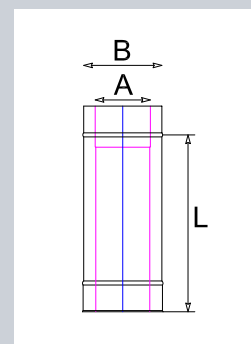
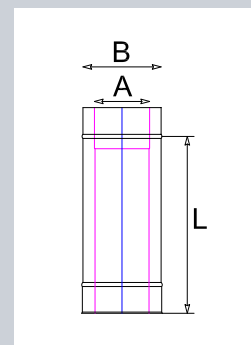
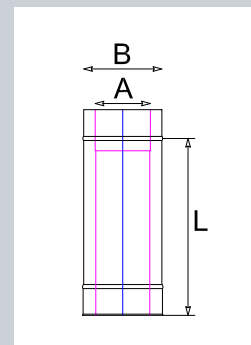
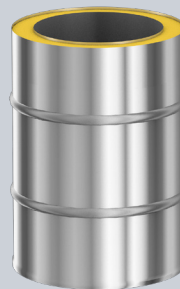
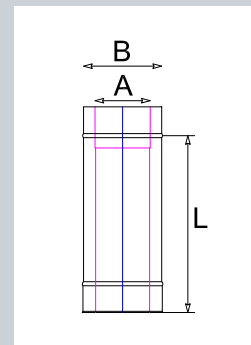
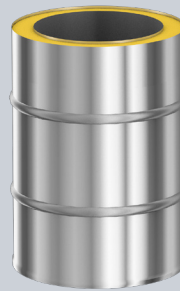
Part No	A	B	L
0105012	130	190	180
0105012MB	130	190	180
0106012	150	210	180
0106012MB	150	210	180

430mm Pipe (Installed)

Part No	A	B	L
0105005	130	190	430
0105005MB	130	190	430
0106005	150	210	430
0106005MB	150	210	430

930mm Pipe (Installed)

Part No	A	B	L
0105002	130	190	930
0105002MB	130	190	930
0106002	150	210	930
0106002MB	150	210	930

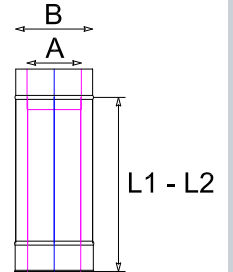


Adjustable Pipe (Installed)

Used to create specific lengths where standard pipes will not fit. Supplied with insulation pads which must be cut to length and installed within the cavity to ensure a fully insulated product. This component must not be installed within a floor/ceiling void.

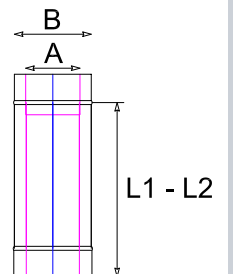
300-430mm Adjustable Pipe (Installed)

Part No	A	B	L1	L2
0105016	130	190	300	430
0105016MB	130	190	300	430
0106016	150	210	300	430
0106016MB	150	210	300	430



430-780mm Adjustable Pipe (Installed)

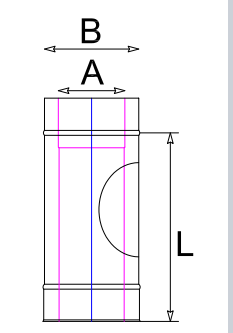
Part No	A	B	L1	L2
0105015	130	190	430	780
0105015MB	130	190	430	780
0106015	150	210	430	780
0106015MB	150	210	430	780



430mm Inspection Pipe (Installed)

Used to provide access for cleaning and inspection.

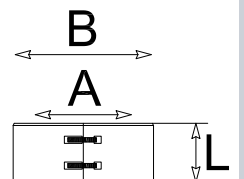
Part No	A	B	L
0105013	130	190	380
0105013MB	130	190	380
0106013	150	210	380
0106013MB	150	210	380



Locking Band

Used to ensure a secure joint between components. Supplied with all items with a male/female fitting. Tightening screws with a 4.0mm Hex head.

Part No	A	B	L
0105086	130	190	82
0105086MB	130	190	82
0106086	150	210	82
0106086MB	150	210	82

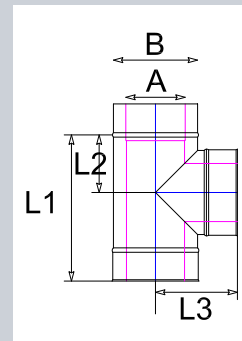
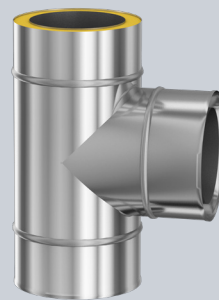


Tees

Used at the base of a vertical rise, or to provide access. Not supplied with tee cap.

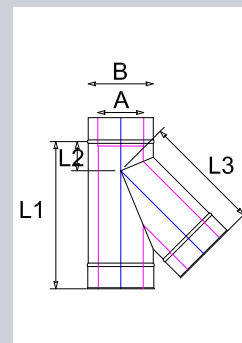
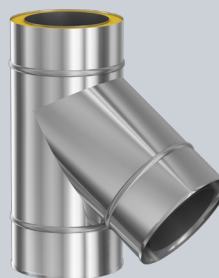
90 Degree Tee

Part No	A	B	L1	L2	L3
0105043	130	190	330	130	185
0105043MB	130	190	330	130	185
0106043	150	210	330	130	195
0106043MB	150	210	330	130	195



135 Degree Tee

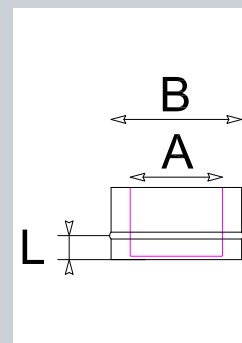
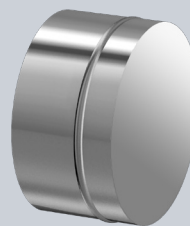
Part No	A	B	L1	L2	L3
0105044	130	190	430	85	345
0105044MB	130	190	430	85	345
0106044	150	210	430	75	355
0106044MB	150	210	430	75	355



Tee Cap

Used to cap off the base or branch of a tee.
Will also fit the bottom of any pipe or bend.

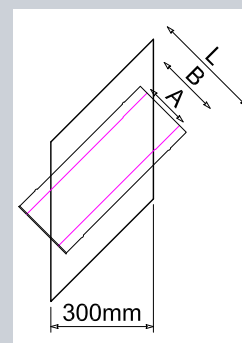
Part No	A	B	L
0105091	130	190	35
0105091MB	130	190	35
0106091	150	210	35
0106091MB	150	210	35



Wall Sleeve (non combustible wall)

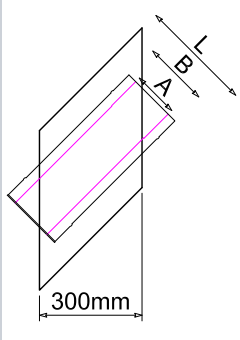
Used to provide an uninterrupted run through a non-combustible wall.

Part No	A	B	L
0105051	130	190	250
0106051	150	210	280



Wall Sleeve (combustible wall)

Part No	A	B	L
0105060	130	190	330
0106060	150	210	330

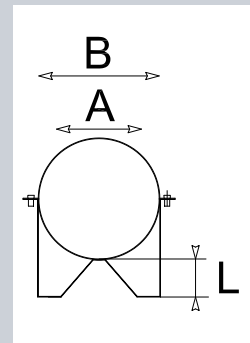
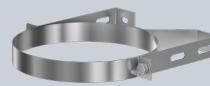


Supports

Standard Wall Band

Provides lateral support for the flue system. Should be used at least every 4m. This items does not load bear. Provides a distance of 60mm from the wall to the back of the pipe.
See page 20 for further information.

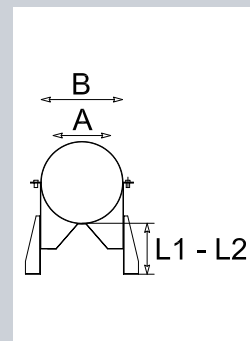
Part No	A	B	L
0105088	130	190	60
0105088MB	130	190	60
0106088	150	210	60
0106088MB	150	210	60



Extended Wall Band 60-110mm

Provides lateral support for the flue system. Should be used at least every 4m. This items does not load bear. Provides a distance of between 60mm & 110mm from the wall to the back of the pipe. See page 20 for further information.

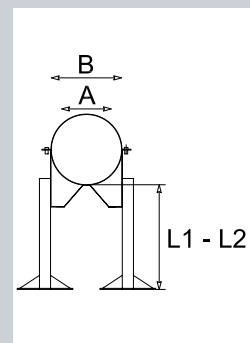
Part No	A	B	L1	L2
0105067	130	130	60	110
0105067MB	130	130	60	110
0106067	150	150	60	110
0106067MB	150	150	60	110



Extended Wall Band 110-250mm

Provides lateral support for the flue system. Should be used at least every 4m. This items does not load bear. Provides a distance of between 110mm & 250mm from the wall to the back of the pipe. Support arms may require trimming to achieve smaller distances. See page 20 for further information.

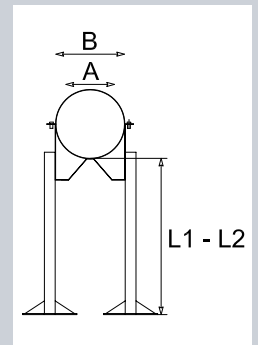
Part No	A	B	L1	L2
0105068	130	190	110	250
0105068MB	130	190	110	250
0106068	150	210	110	250
0106068MB	150	210	110	250



Extended Wall Band 250-400mm

Provides lateral support for the flue system. Should be used at least every 4m. This item does not load bear. Provides a distance of between 250mm & 400mm from the wall to the back of the pipe. Support arms may require trimming to achieve smaller distances. See page 20 for further information.

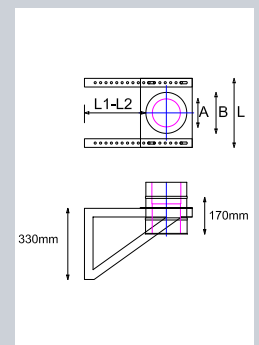
Part No	A	B	L1	L2
0105069	130	190	250	400
0105069MB	130	190	250	400
0106069	150	210	250	400
0106069MB	150	210	250	400



Extended Wall Support 60-260mm

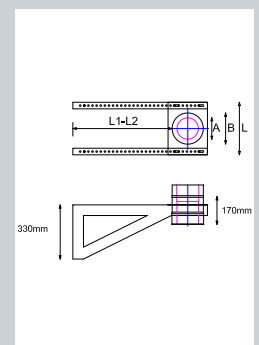
Provides support for vertical flue. See load bearing data on page 20. Provides a distance of between 260mm & 580mm from the wall to the back of the flue pipe. Support length and pair of cantilevers supplied.

Part No	A	B	L	L1	L2
0105998	130	190	320	60	260
0105998MB	130	190	320	60	260
0106998	150	210	340	60	260
0106998MB	150	210	340	60	260



Extended Wall Support 260-580mm

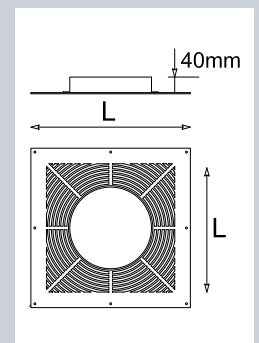
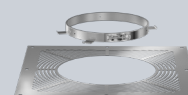
Part No	A	B	L	L1	L2
0105999	130	190	320	260	580
0105999MB	130	190	320	260	580
0106999	150	210	340	260	580
0106999MB	150	210	340	260	580



Ventilated Support Plate

Supports the flue when passing through a ceiling/floor void. Clamps around flue and transfers weight to the plate. See load bearing data on page 20. Vents allow air to pass through and provides air movement into the boxing in, or loft above. Plate must be supported on all four edges.

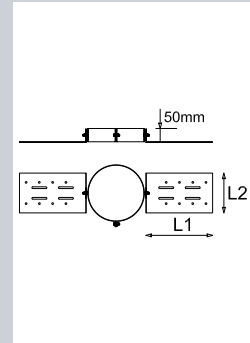
Part No	A	B	L
0105028	130	190	410
0105028MB	130	190	410
0106028	150	210	410
0106028MB	150	210	410



Roof Support

Provides flue support as the flue passes through the roof. Adjustable gimble plates allow component to be set at any angle. Fixes into the roof joists. This component provides lateral support only.

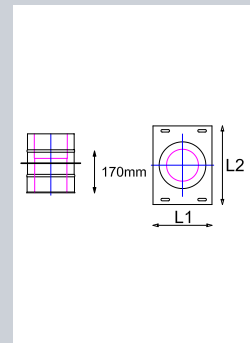
Part No	A	B	L1	L2
0105029	130	190	250	150
0105029MB	130	190	250	150
0106029	150	210	250	150
0106029MB	150	210	250	150



170mm Support Length (Installed)

Small flue length (170mm installed length), fixed onto a support plate. Generally used as part of the wall support assembly. See load bearing data on page 20.

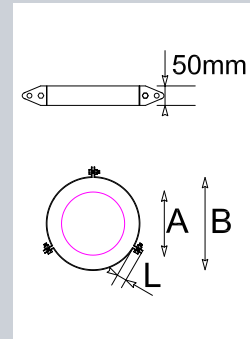
Part No	A	B	L1	L2
0105066	130	190	240	320
0105066MB	130	190	240	320
0106066	150	210	260	340
0106066MB	150	210	260	340



Guy Wire Bracket

Component clamps around the flue and provides three points to affix guy wires or rigid stays. Used for external runs above the roof. See page 20 for further information.

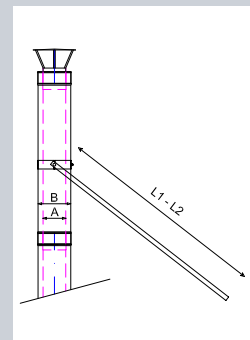
Part No	A	B	L
0105092	130	190	50
0105092MB	130	190	50
0106092	150	210	50
0106092MB	150	210	50



Telescopic Roof Support

Component clamps around the flue and is supplied with two extension roof bars. Create an 'A' frame for stability. Extension arms adjust between 1.8 & 3.2m. See page 20 for further information.

Part No	A	B	L1	L2
0105027	130	190	1900	3000
0105027MB	130	190	1900	3000
0106027	150	210	1900	3000
0106027MB	150	210	1900	3000

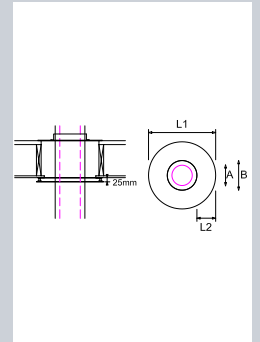
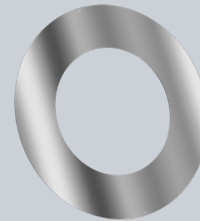


Firestops & Penetration Components

Magnetic Fire Shield Cover

Used in conjunction with the Ventilated Fire Shield this component provides a neat finish and aesthetic finish. Magnets secure the component to the Ventilated Fire Shield and ensure a 25mm air gap.

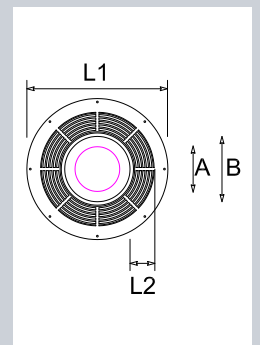
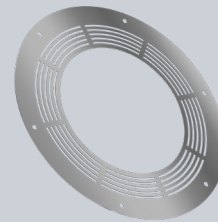
Part No	A	B	L1	L2
0105110	130	190	430	117
0105110MB	130	190	430	117
0106110	150	210	430	107
0106110MB	150	210	430	107



Ventilated Fire Shield (round)

Circular fire shield with vents. Use on the ceiling where flue is penetrating into a room above. The magnetic cover could be used to provide a more aesthetic look.

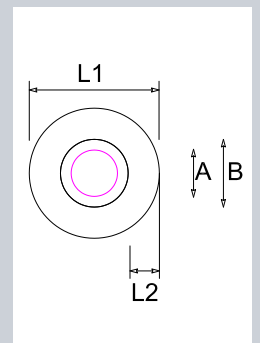
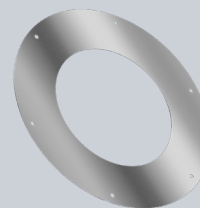
Part No	A	B	L1	L2
0105083	130	190	410	60
0105083MB	130	190	410	60
0106083	150	210	410	60
0106083MB	150	210	410	60



90 Degree Trim Collar (can be used as bungalow firestop)

Circular fire stop without vents. Use on the ceiling where flue is penetrating into a loft space above. Also use when passing horizontally through a wall.

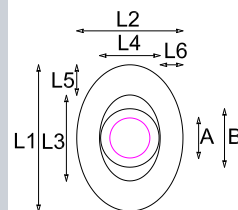
Part No	A	B	L1	L2
0105183	130	190	365	84
0105183MB	130	190	365	84
0106183	150	210	365	74
0106183MB	150	210	365	74



135 Degree Trim Collar

Elliptical trim collar for when a flue passes through a wall at 45 degrees.

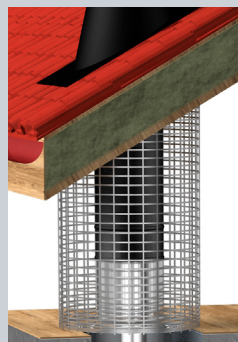
Part No	A	B	L1	L2	L3	L4	L5	L6
0105106	130	190	500	365	280	197	110	84
0105106MB	130	190	500	365	280	197	110	84
0106106	150	210	500	365	304	217	98	74
0106106MB	150	210	500	365	304	217	98	74



Flue Enclosure Kit

To be used within a loft area & ensures that combustible items can not touch the flue pipe. Supplied as 2 x 1.2m mesh lengths, 4 x flue clamps and bolt fixings. Mesh can be cut to exact lengths or to suit bends.

Diameter	Part No
130mm	0105557
150mm	0106557

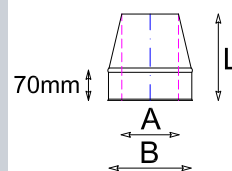


Terminations

Top Stub

Open terminal. Allows uninterrupted exit of flue gases. Outer skin tapers to the inner skin. (Note that the inner skin does not reduce).

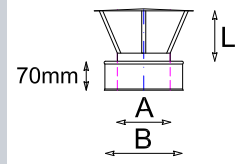
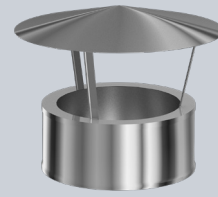
Part No	A	B	L
0105073	130	190	200
0105073MB	130	190	200
0106073	150	210	200
0106073MB	150	210	200



Rain Cap

Provides a limited amount of weather protection.

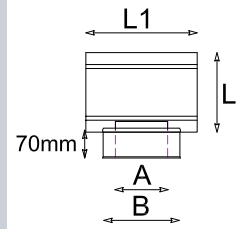
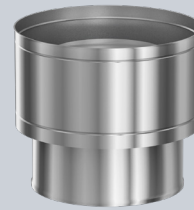
Diameter	Part No	A	B	L
130mm	0105074	130	190	150
130mm	0105074MB	130	190	150
150mm	0106074	150	210	185
150mm	0106074MB	150	210	185



Storm Cowl

Provides significant protection against wind and rain. Also offers protection against large birds and vermin.

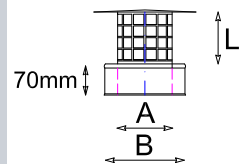
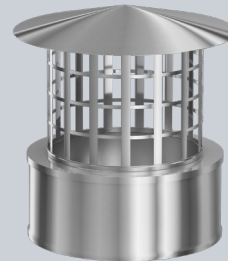
Part No	A	B	L	L1
0105075	130	190	200	280
0105075MB	130	190	200	280
0106075	150	210	200	300
0106075MB	150	210	200	300



Rain Cowl With Mesh

Provides a limited amount of weather protection, and prevents birds and vermin entry. Allows a 25mm sphere to pass through mesh.

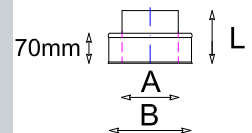
Part No	A	B	L
0105076	130	190	130
0105076MB	130	190	130
0106076	150	210	150
0106076MB	150	210	150



Top Adaptor to Single Wall

Provides a top spigot above the DW30 system. This item can be used to allow connection of anti-down draught terminals, flue fans, adaptors to flexible liner, etc.

Part No	A	B	L
0105063	130	190	123
0105063MB	130	190	123
0106063	150	210	123
0106063MB	150	210	123

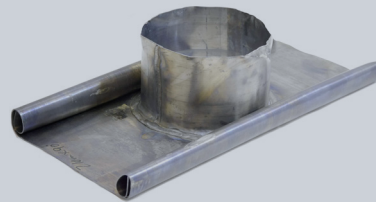


Flashings

Lead Flashing - Flat

Suitable for slates, flat tiles and pan tiles.

Int. Diameter	Ext. Diameter	Part No
130mm	210mm	8808038
150mm	235mm	8809038



Lead Flashing - 30° Pitch

Suitable for slates, flat tiles and pan tiles.

Int. Diameter	Ext. Diameter	Part No
130mm	210mm	8808030
150mm	235mm	8809030



Lead Flashing - 35° Pitch

Suitable for slates, flat tiles and pan tiles.

Int. Diameter	Ext. Diameter	Part No
130mm	210mm	8808035
150mm	235mm	8809035



Lead Flashing - 45° Pitch

Suitable for slates, flat tiles and pan tiles.

Int. Diameter	Ext. Diameter	Part No
130mm	210mm	8808045
150mm	235mm	8809045



Res 1 Uni-Flash

Rubber upstand on malleable metal base.
Suitable for slate, flat tile and pan tile roof.

Int. Diameter	Ext. Diameter	Part No
130mm	75 - 200mm	1801035

Res 2 Uni-Flash

Rubber upstand on malleable metal base.
Suitable for slate, flat tile and pan tile roof.

Int. Diameter	Ext. Diameter	Part No
150mm	200 - 275mm	1802035

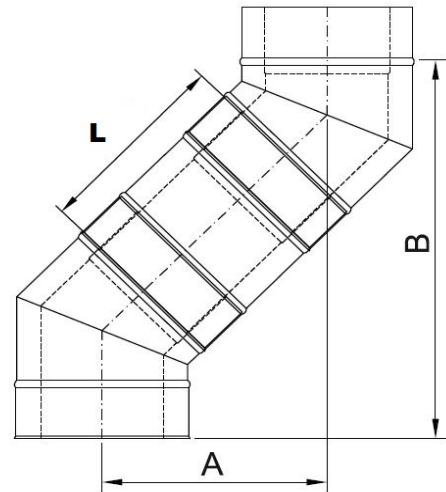


**OTHER FLASHINGS AND ANCILLARIES
CAN BE FOUND IN THE SPECFLUE
PRICE LIST OR VISIT OUR WEBSITE:**

WWW.SPECFLUE.COM

Elbow Offset Chart

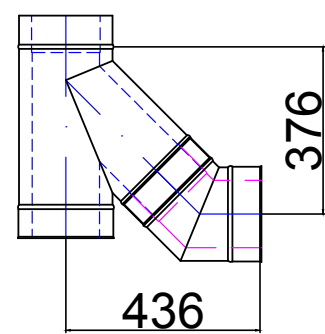
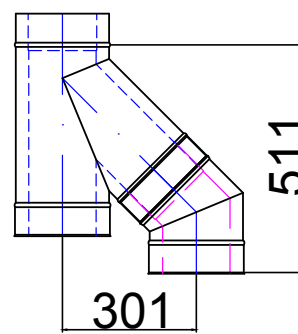
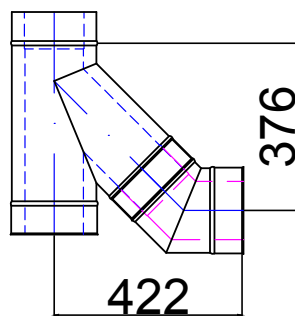
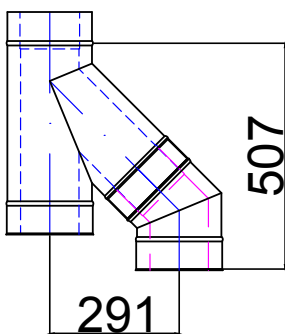
L = Installed length	130mm DN		150mm DN	
	A	B	A	B
2 X 30° BEND	86	323	89	333
2 X 30° BEND + 80L	126	392	129	402
2 X 30° BEND + 180L	177	480	180	490
2 X 30° BEND + 430L	302	697	305	707
2 X 30° BEND + 930L	552	1130	555	1140
2 X 45° BEND	142	343	148	357
2 X 45° BEND + 80L	198	399	204	413
2 X 45° BEND + 180L	271	468	276	485
2 X 45° BEND + 430L	447	648	453	662
2 X 45° BEND + 930L	801	1002	807	1016



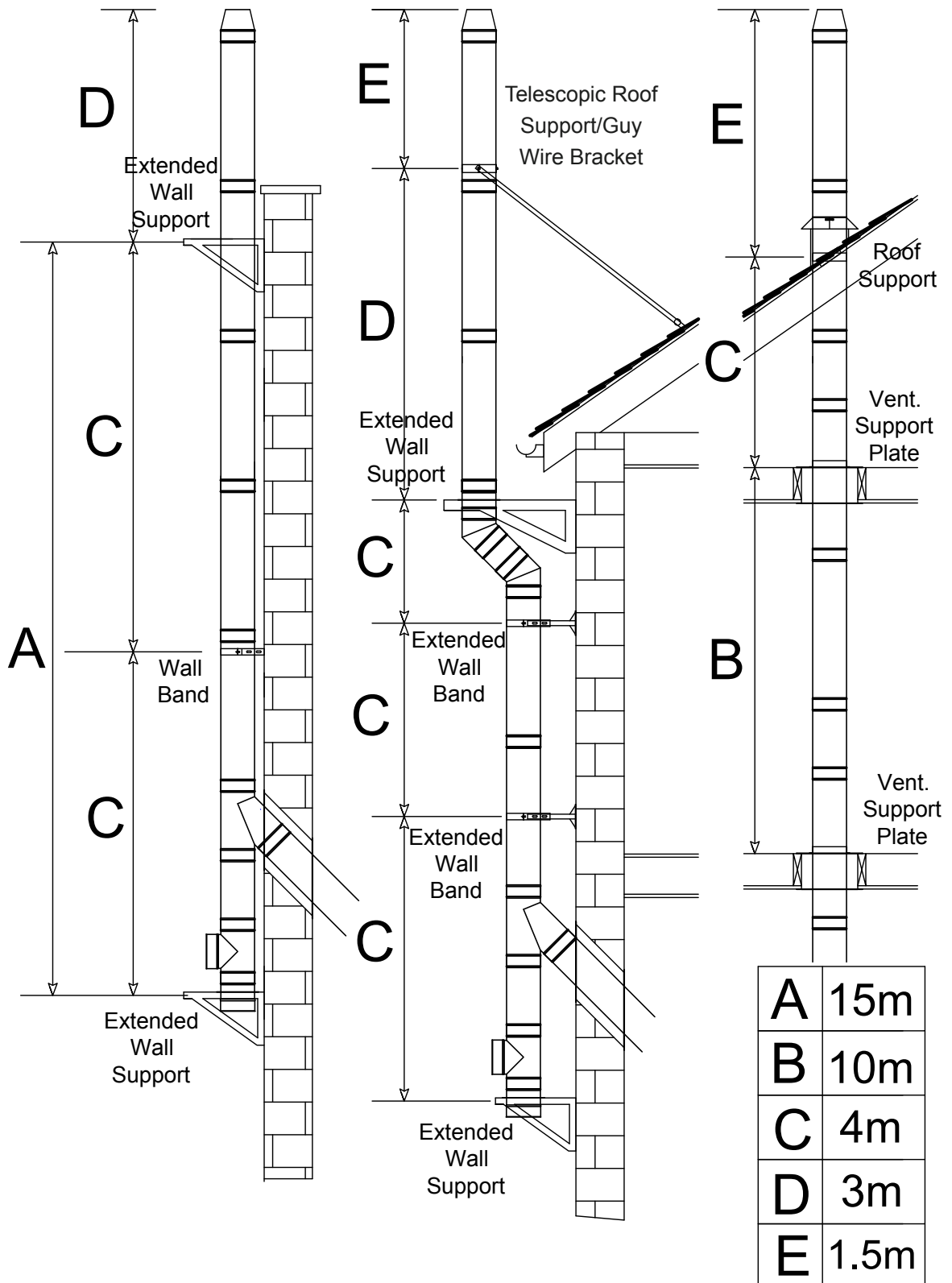
135° Tee Offset Chart

130mm DN

150mm DN



Maximum Load Bearing Data



Additional Information

Regulations

In all instances the requirements of the Building Regulations must be complied with and the appropriate references are: Document J of the DOE Building Regulations, Section F of the Building Standards (Scotland), Section L of the Building Regulations (Northern Ireland). Reference should also be made to the relevant British and European Standards governing the installation of flue and chimney products for the associated fuel and appliance types detailed:

Solid Fuel and Oil Fired application: BS EN15287-1

Domestic Gas Installations: BS5440:Part 1 2008

Note: In the UK, connection to an appliances which is not connected to the fuel supply, may be carried out by a competent person. However, connection to an appliance connected to the fuel supply must be carried out by an approved and registered Heating Engineer, e.g. Gas Safe, HETAS (solid fuel) or OFTEC (oil).

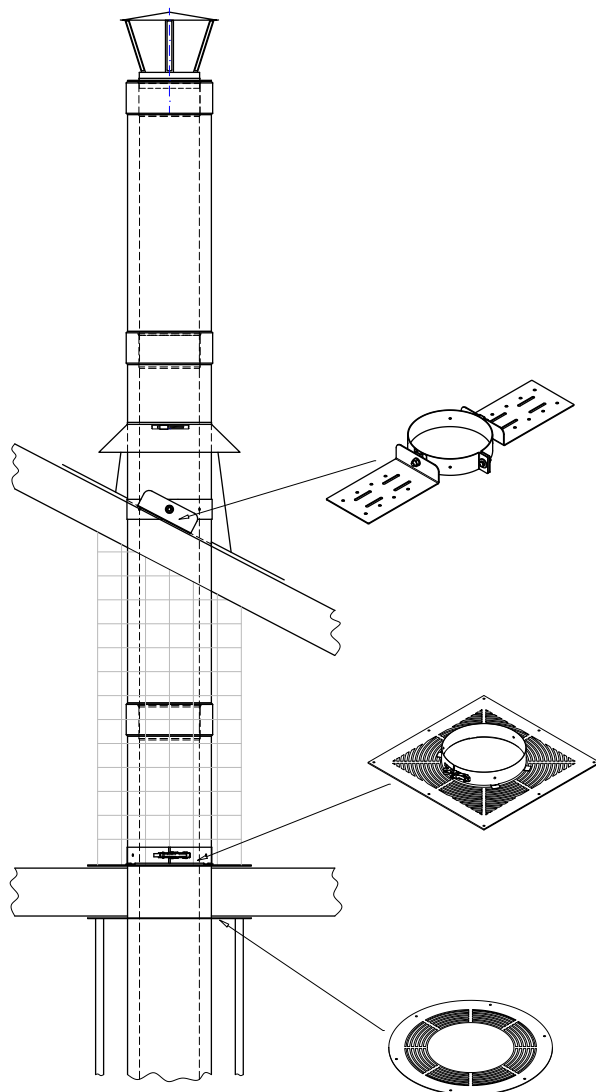
For other European countries, reference should be made to EN 15287-1 and their associated National Annex NA.

Jointing

The Specflue DW30 system is built from the bottom upwards. The joints are made by fitting a female end over the preceding male end, and then applying a locking band. Locking bands are supplied with all components with male/female fitting.

Appliance connection and condensate removal

The appliance connector or associated adaptor should be used to facilitate connection from the appliance to the chimney. It is recommended that the joint between the adaptor and the appliance/flue pipe is securely caulked and sealed with fibre rope and fire cement. Any flue pipe connection to the chimney must be made in the same room. Condensation removal should be determined by each individual application. The system must be designed to facilitate future appliance removal.



Warranty and Life Expectancy

For peace of mind, Specflue DW30 carries a 25 year conditional warranty. This covers any product failure or manufacturing defect providing that the chimney system has been correctly installed and maintained. The chimney system must be swept once a year with no breaks and the sweeps certificates must be kept by the householder.

Only HETAS approved fuels can be used (refer to the HETAS guide www.hetas.co.uk). Any other fuels will invalidate the warranty.

If the Specflue DW30 suffers a chimney fire, the warranty will also be invalidated. We would also recommend that you replace the system before using the appliance again.

Components within the range that are manufactured from only single skin can be vulnerable when exposed to the products of construction from solid fuel appliances. This is especially true for terminals. The tee caps, when used on solid fuel applications, are also vulnerable to flue gas by-products, particularly if the chimney is not regularly maintained and cleaned. Such components are considered sacrificial and their life expectancy will vary depending on application, location, maintenance and fuel usage. For this reason, these items are only covered by a twelve month manufacturing defects warranty.

It should also be noted that chemically contaminated combustion air will affect the quality of the product as will the use of chemical chimney cleaners. Typical examples of contaminated combustion air has been seen in de-greasing plants and dry cleaning companies.

Specflue does not recommend fuels such as petroleum coke or other fuels containing a blend of petroleum coke. Also some smokeless fuels contain halogens that are released when burned, forming hydrochloric or hydrofluoric acids. These fuels can lead to premature failure of the chimney system through corrosion. Before burning any fuel, Specflue would suggest that written confirmation is obtained from the fuel manufacturer that the fuel is halogen free.

Some bio fuels when burnt give off aggressive and corrosive acids which attack and cause premature failure of stainless steel components. External protection should also be applied where the product is installed externally in coastal locations. This could be achieved using a specialist protective coating or by painting the outer case. Only stainless steel components should be used for external applications.

Provision for sweeping and cleaning

Adequate provision should be made for inspecting and cleaning the chimney system. This is particularly important for solid fuel applications.

Specflue recommends that chimneys are swept at least once a year.

At the time of sweeping it is important that a visual inspection of the flue is undertaken.

Testing

On completion, a flue test appropriate to the installed appliance should be carried out by an appropriate person, with a copy of the results left with the homeowner.

DW30 CHIMNEY SYSTEM

PART NO.	STARTING COMPONENTS	130mm	150mm
0105094	Specvit/Prima Smooth to DW30 Adaptor	43.06	-
01**097	Increasing Adaptor	43.06	43.78
0106098	Specvit to DW30 Adaptor	-	43.78
0106099	Prima Smooth to DW30 Adaptor	-	43.78
01**089	Anchor Plate	98.21	108.07
PART NO.	PIPES	130mm	150mm
01**002	930mm Pipe	116.14	129.81
01**005	430mm Pipe	86.54	103.95
01**012	180mm Pipe	51.51	64.90
01**006	80mm Pipe	42.93	44.64
01**016	Adjustable Pipe 300-430mm	110.58	118.82
01**015	Adjustable Pipe 430-780mm	147.66	157.97
01**013	430mm Inspection Pipe	110.92	122.25
01**086	Locking Band	18.89	19.92
PART NO.	BENDS & TEES	130mm	150mm
01**023	30° Bend	82.55	95.23
01**022	45° Bend	82.55	95.23
01**043	90° Tee	133.24	137.02
01**044	135° Tee	204.16	222.53
01**091	Tee Cap	39.49	43.61
01**050	Angled Wall Sleeve Combustible Wall	44.22	44.22
01**051	Angled Wall Sleeve Non Combustible Wall	40.35	40.35
PART NO.	SUPPORTS & FIRE SHIELDS	130mm	150mm
01**088	Wall band 60mm	37.77	41.21
01**067	Adj Wall band 60-110	76.92	80.71
01**068	Adj Wall band 110-250mm	121.22	124.66
01**069	Adj Wall band 250-400mm	129.46	132.90
01**998	Adj Wall Support 60-260mm	184.75	195.02
01**999	Adj Wall Support 260-580mm	200.55	210.82
01**028	Ventilated Support Plate	84.48	91.69
01**029	Roof Support	36.06	38.80
01**092	Guy Wire Bracket	17.17	20.60
01**083	Ventilated Fire Shield Round	78.30	86.20
01**110	Magnetic Fire Shield Cover	56.66	62.50
01**183	90° Trim Collar	30.91	34.00
01**106	135° Trim Collar	34.34	37.43
01**027	Telescopic Roof Support	163.47	166.90
01**557	Flue Enclosure Kit	215.00	220.00
PART NO.	TERMINATION COMPONENTS	130mm	150mm
01**041	Storm Collar	28.74	32.01
01**073	Top Stub	61.64	68.89
01**074	Rain cap	71.22	73.52
01**075	Storm Cowl	83.72	88.26
01**076	Rain Cap with mesh	62.84	67.82
01**063	Adaptor to Single Wall	42.07	43.10

** Denotes diameter ie. 05 = 130mm

DW30 CHIMNEY SYSTEM MATT BLACK

PART NO.	STARTING COMPONENTS	130mm	150mm
0105094MB	Specvit/Prima Smooth to DW30 Adaptor	52.03	-
01**097MB	Increasing Adaptor	52.03	52.92
0106098MB	Specvit to DW30 Adaptor	-	52.92
0106099MB	Prima Smooth to DW30 Adaptor	-	52.92
01**089MB	Anchor Plate	118.85	130.77
PART NO.	PIPES	130mm	150mm
01**002MB	930mm Pipe	140.25	160.78
01**005MB	430mm Pipe	104.50	126.00
01**012MB	180mm Pipe	62.33	78.54
01**006MB	80mm Pipe	51.96	54.02
01**016MB	Adjustable Pipe 300-430mm	133.79	143.78
01**015MB	Adjustable Pipe 430-780mm	178.67	191.14
01**013MB	430mm Inspection Pipe	134.20	147.94
01**086MB	Locking Band	22.87	24.11
PART NO.	BENDS & TEES	130mm	150mm
01**023MB	30° Bend	99.35	115.11
01**022MB	45° Bend	99.35	115.11
01**043MB	90° Tee	161.23	165.80
01**044MB	135° Tee	247.01	269.27
01**091MB	Tee Cap	47.80	52.78
01**050	Angled Wall Sleeve Combustible Wall	44.22	44.22
01**051	Angled Wall Sleeve Non Combustible Wall	40.35	40.35
PART NO.	SUPPORTS & FIRE SHIELDS	130mm	150mm
01**088MB	Wall band 60mm	45.71	49.86
01**067MB	Adj Wall band 60-110	93.07	97.22
01**068MB	Adj Wall band 110-250mm	146.67	150.82
01**069MB	Adj Wall band 250-400mm	156.66	160.81
01**998MB	Adj Wall Support 60-260mm	223.55	235.95
01**999MB	Adj Wall Support 260-580mm	242.68	255.08
01**028MB	Ventilated Support Plate	102.23	110.95
01**029	Roof Support	36.06	38.80
01**092MB	Guy Wire Bracket	20.78	24.93
01**083MB	Ventilated Fire Shield Round	94.75	104.29
01**110MB	Magnetic Fire Shield Cover	68.58	75.62
01**183MB	90° Trim Collar	37.40	41.14
01**106MB	135° Trim Collar	41.55	45.30
01**027MB	Telescopic Roof Support	167.08	171.23
01**557	Flue Enclosure Kit	215.00	220.00
PART NO.	TERMINATION COMPONENTS	130mm	150mm
01**041MB	Storm Collar	34.34	38.74
01**073MB	Top Stub	74.59	83.34
01**074MB	Rain cap	86.02	88.43
01**075MB	Storm Cowl	101.30	106.80
01**076MB	Rain Cap with mesh	76.03	82.07
01**063MB	Adaptor to Single Wall	50.90	52.13

** Denotes diameter ie. 05 = 130mm

DW30 by

SPECFLUE

...designed to be better

Specflue Ltd, 9 Curzon Close, Chilton Industrial Estate, Sudbury, Suffolk, CO10 2XW
Email: sales@specflue.com Tel: 0333 999 7974