

FRxAxFD6

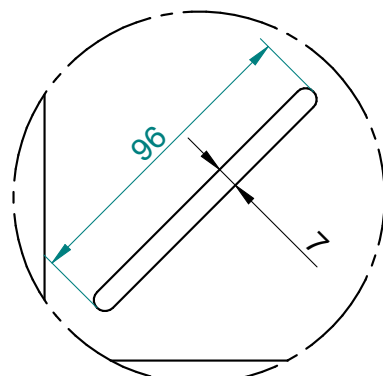
- cover plate for rockwool mat

A cover plate from **exodraft** allows you to cover the soundproofing rockwool mat under the chimney fan for a more aesthetically pleasing look while protecting it from weather influences and animals. The cover plate also comes with an insert sleeve for mounting a temperature sensor, if you have an **exodraft** control unit with temperature monitoring.

The **exodraft** cover plates are suitable for both brick and steel chimneys. FRxAxFD6 versions are for use on steel chimneys and match the **exodraft** flange for RSV chimney fans. FRxAxFD6-001 versions are for use on brick chimneys and can go straight on the

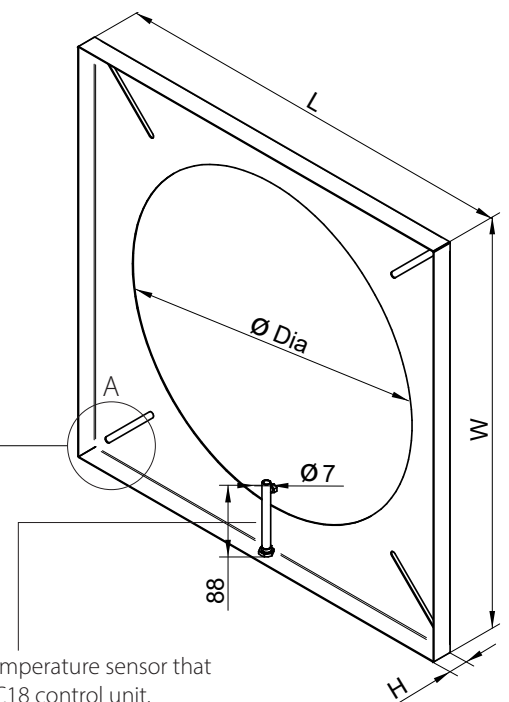
chimney without the use of a flange (for mounting on brick chimneys, we recommend using our vibration dampers type RSD).

The cover plates are made from galvanised steel, making them very robust and weather-proof. They are painted in chimney fan paint (corresponding to RAL 7021) for an overall cohesive look.



DETAIL A

Sleeve for holding the temperature sensor that comes with **exodraft** EFC18 control unit.



Type	L x W x H (mm)	Ø Dia (mm)	Material	RAL colour
FR1AFD6	284 x 284 x 35	197	Galvanised steel	7021 (black grey), brilliance 20
FR1AFD6-001	284 x 284 x 24,5	197	Galvanised steel	7021 (black grey), brilliance 20
FR2AFD6	322 x 322 x 35	247	Galvanised steel	7021 (black grey), brilliance 20
FR2AFD6-001	322 x 322 x 24,5	247	Galvanised steel	7021 (black grey), brilliance 20
FR3AFD6	407 x 407 x 35	347	Galvanised steel	7021 (black grey), brilliance 20
FR3AFD6-001	407 x 407 x 24,7	347	Galvanised steel	7021 (black grey), brilliance 20
FR4AFD6	512 x 512 x 35	402	Galvanised steel	7021 (black grey), brilliance 20
FR4AFD6-001	512 x 512 x 24,5	402	Galvanised steel	7021 (black grey), brilliance 20

FRxAFD6 versions are intended for use on steel chimneys with one of our corresponding FR flanges.

FRxAFD6-001 versions are intended for use on brick / masonry chimneys and can be placed directly on the chimney with a layer of mineral wool between.

