



Concealing the Fans

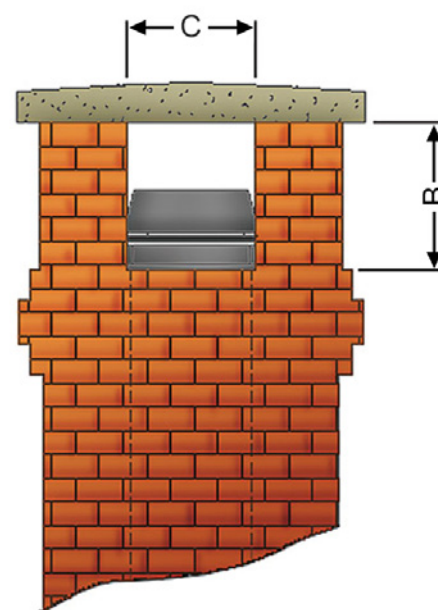
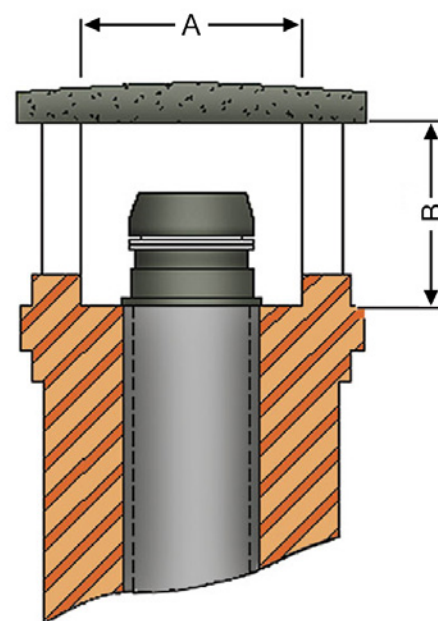
Special site conditions or requirements such as listed building status or other special architectural demands can sometimes make installation of an exodraft chimney fan difficult. For those installations, you can make the fan "invisible".

Chimney fan type RS • RSHG

The **exodraft** chimney fan is built into a "dovecote" terminal.

- The distance from the top of the chimney fan to the capping must allow for the fan to be lifted out or tipped on its hinges for service.
- The openings to the side must also be large enough for the smoke to escape.

The capping and brickwork according the architect's detail.



Chimney fan	A	B min.	C min.
RS009	330	500	285
RS012 RSHG012	395	525	350
RS014 RSHG014	450	580	395
RS016	510	655	450
RS255	395	650	350
RS285	450	605	395

Measured in millimetres (mm)



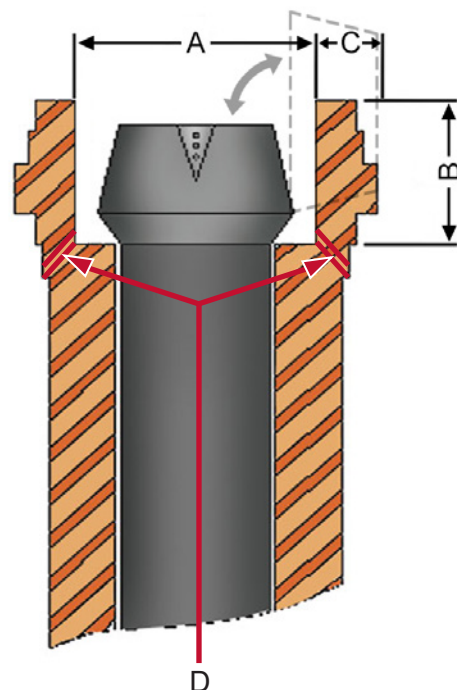
exodraft a/s
 Industrivej 10
 DK-5550 Langeskov
 Tel: +45 7010 2234
 Fax: +45 7010 2235
 info@exodraft.dk
 www.exodraft.com



Chimney fan type RSV • RSVG

The **exodraft** chimney fan is installed on top of the chimney and the brickwork built around the chimney fan (height B).

- There must be room (A) for the fan to be lifted out or the distance to the back must be increased (A+C) to enable the chimney fan to be tipped open on its hinges for service.
- The distance between the fan and the brickwork must be large enough to allow for cooling air to the fan motor.
- To ensure that condensed water or rain water can exit, drain holes (D) must be made.

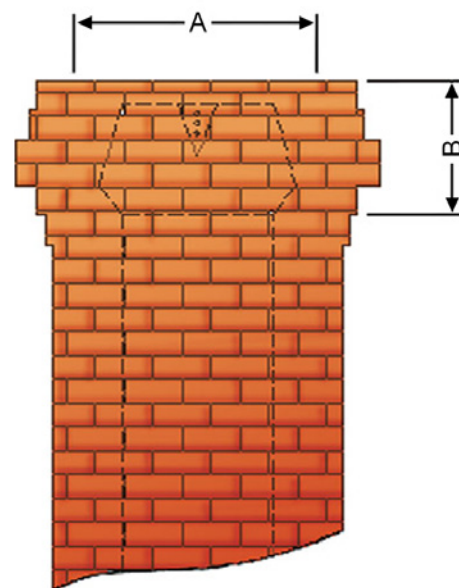


D. Drain holes for rain or condensed water.

Brickwork according the architect's detail.

Chimney fan	A	B max.	C
RSV009			
RSV160	510	350	80
RSV012			
RSV200	590	380	100
RSVG200			
RSV014			
RSV250	685	435	140
RSVG250			
RSV016			
RSV315	780	480	170
RSVG315			

Measured in millimetres (mm)



exodraft a/s
 Industrivej 10
 DK-5550 Langeskov
 Tel: +45 7010 2234
 Fax: +45 7010 2235
 info@exodraft.dk
 www.exodraft.com

