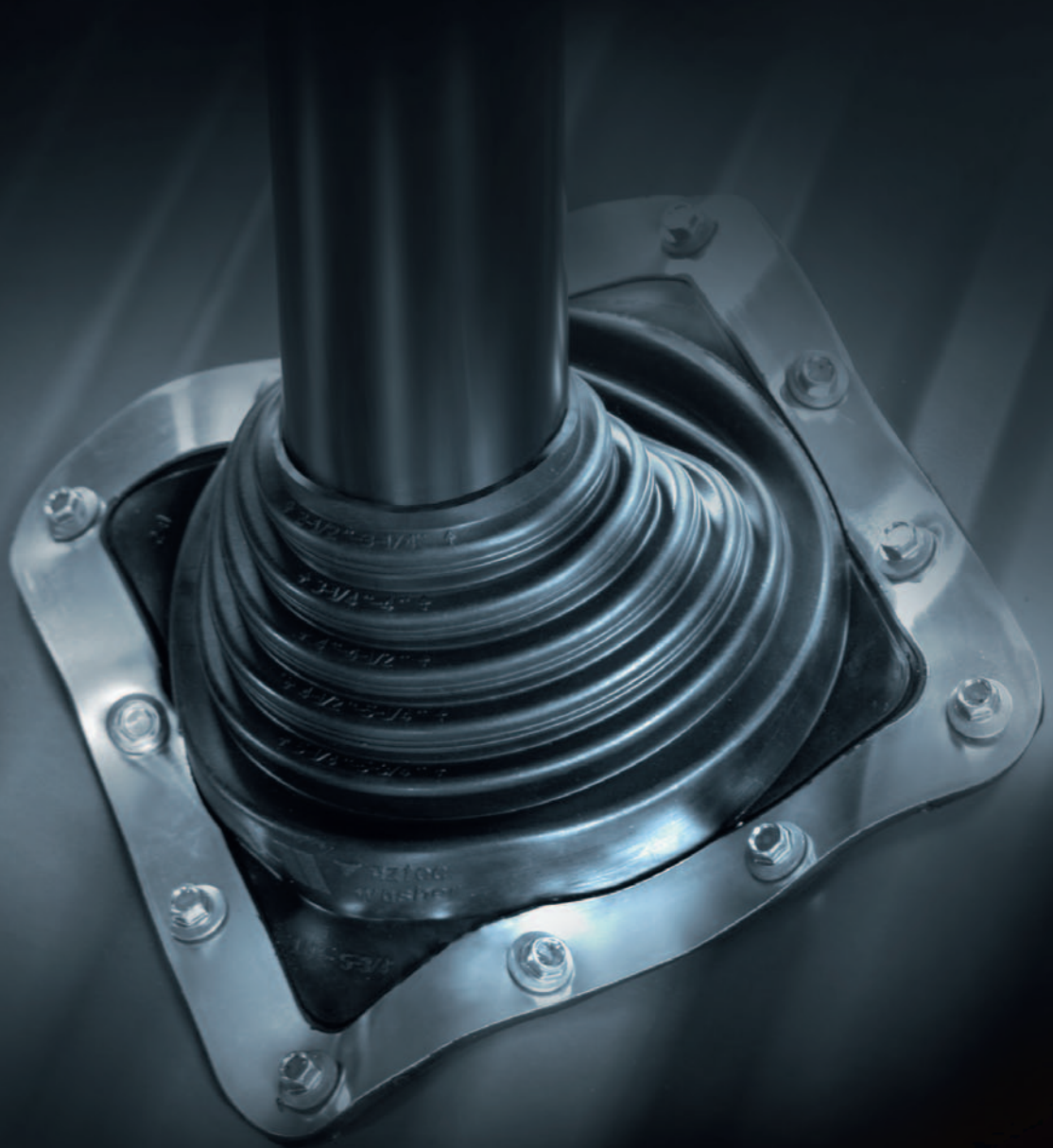


Master Flash®

PRODUCT CATALOGUE



 **Aztec**
U.K. Ltd.

Master Flash®

Our extensive range of Master Flash® products, from Standard to Residential, from Retrofit to Extreme Angles, from Low Profile to Solar Flash, is sure to meet the needs of all of our customers. Made of Silicone or EPDM Rubber, our Master Flash® flashings are compounded specifically for maximum resistance to weathering caused by ozone exposure and ultraviolet light. These two materials mean that we can offer flashings that are able to withstand temperatures of up to 260°C and down to as low as -74°C. Such a large temperature range means that our products are ideal for the heating season and are therefore perfectly suited for chimneys and stoves.

Master Flash® products guarantee watertight sealing around both round and square pipes. They can be used on all types of roofing including, but not limited to, profiled metal roofs, flat, angled, membranes, plastic, and concrete or slate tiles.

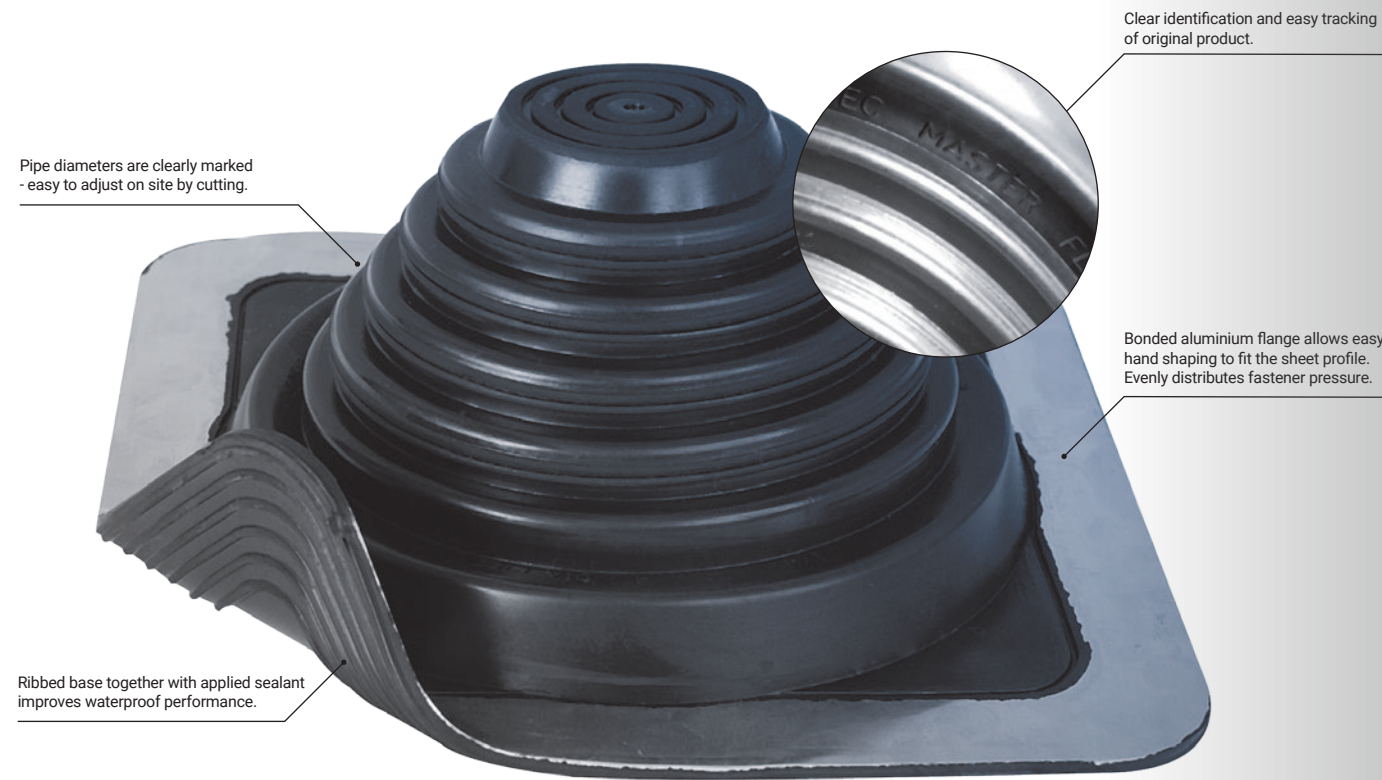
Aztec Washer Company manufactures Master Flash® in its own factories. The entire supply chain is controlled internally with nothing made under licence. Aztec are innovators, continuously bringing new products to the market place. Thanks to a highly skilled manufacturing team, an R&D department, and a specially-trained chemist, Aztec is active in development of new products and high standards.

Alongside our standard 20-year warranty, we do offer a range of products that carry a 35-year warranty, which are available on special request. Whilst the product range we hold is wide, we do have certain non-standard products, types, and colours and therefore encourage our customers to always check for availability with our sales teams for special solutions.

Aztec offers flashings :

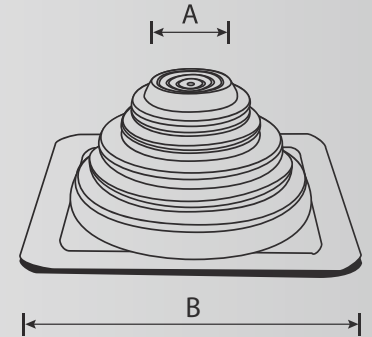
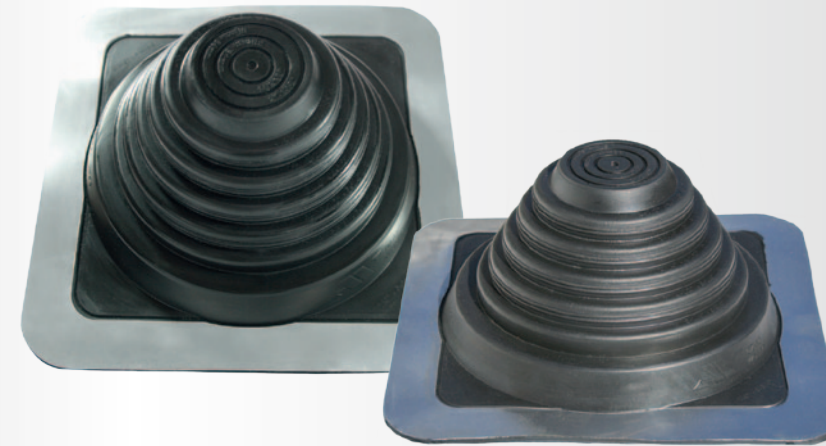
- made of EPDM (Ethylene Propylene Diene Monomer) or Silicone
- for industrial and residential buildings
- with square base and round bases
- for solar panel applications
- for square tubing
- in a wide range of EPDM colours (on special request)
- with 20 years manufacturer warranty (or 35 years on special request)

Master Flash®	EPDM 500	Silicone
ADVANCED OZONE RESISTANCE tested to:	70 h @ 500 pphm	70 h @ 500 pphm
HIGH TEMPERATURE RESISTANCE		
tested to:	intermittent	+135°C (+275°F)
	continuous	+100°C (+212°F)
LOW TEMPERATURE RESISTANCE tested to:		
		-55°C (-67°F)
TENSILE SET maximum	10 MPa (1450 psi)	5 MPa (725 psi)
COMPRESSION SET maximum	25%	50%



Master Flash® Standard

- Material: EPDM / Silicone
- 13 sizes / designed for 0" to 39-1/2" (0 - 1000 mm) diameter pipes
- Available in 10 EPDM colours (check page 27)
- The soft aluminium base fits easily to most metal roof profiles
- Sleeve flexibility accommodates vibration and pipe movement caused by expansion / contraction

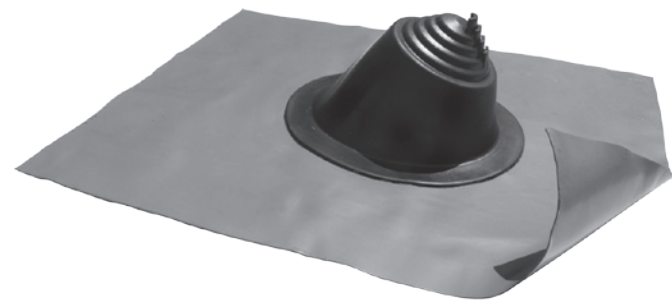


Suitable when installation is possible by sliding the flashing down the pipe.

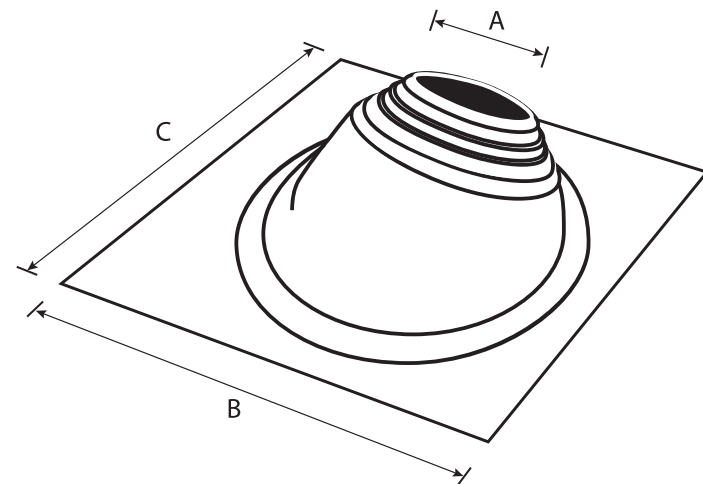
Master Flash® Standard

No.	Pipe Range	Material	Black EPDM Catalogue Number	A-Top Opening	B-Base Dimensions
Mini	Closed - 1" (0 - 25 mm)	Black or Colour EPDM, Silicone	SQ051BA	Closed	2-1/4" (57 mm)
1	Closed - 2-3/4" (0 - 70 mm)	Black or Colour EPDM, Silicone	SQ101BA	Closed	4-1/2" (114 mm)
2	5/8" - 4" (15 - 101 mm)	Black or Colour EPDM, Silicone	SQ201BA	5/8" (15 mm)	6" (152 mm)
3	Closed - 5-3/4" (0 - 146 mm)	Black or Colour EPDM, Silicone	SQ301BA	Closed	8" (203 mm)
4	2-3/4" - 7" (70 - 177 mm)	Black or Colour EPDM, Silicone	SQ401BA	2-3/4" (70 mm)	10" (254 mm)
5	4" - 8-1/4" (101 - 209 mm)	Black or Colour EPDM, Silicone	SQ501BA	4" (101 mm)	11" (279 mm)
6	4-3/4" - 10" (121 - 254 mm)	Black or Colour EPDM, Silicone	SQ601BA	4-3/4" (121 mm)	12" (304 mm)
7	6" - 11" (152 - 279 mm)	Black or Colour EPDM, Silicone	SQ701BA	6" (152 mm)	14" (355 mm)
8	6-3/4" - 13-1/2" (171 - 343 mm)	Black or Colour EPDM, Silicone	SQ801BA	6-3/4" (171 mm)	17" (431 mm)
9	9-1/2" - 20-1/2" (241 - 520 mm)	Black or Colour EPDM, Silicone	SQ901BA	9-1/2" (241 mm)	25" (635 mm)
9X	6-1/4" - 20-1/2" (158 - 520 mm)	Black or Grey EPDM, Silicone	SQ901BX	6-1/4" (158 mm)	25" (635 mm)
Maxi Closed	Closed - 28-1/2" (0 - 724 mm)	Black or Colour EPDM, Silicone	SQ951BA-C	Closed	34" (863 mm)
Maxi Open	12" - 28-1/2" (304 - 724 mm)	Black or Colour EPDM, Silicone	SQ951BA-O	12" (304 mm)	34" (863 mm)
Maxi XL	10" - 39-1/2" (254 - 1000 mm)	Black or Grey EPDM, Silicone	SQ961BA	10" (254 mm)	44" (1118 mm)

Master Flash® Residential Lead



Suitable for small format roofing types such as tar paper shingles, cement tiles or ceramic tiles.



Master Flash® Residential Lead

No.	Pipe Range	Material	Black EPDM Catalogue Number	A-Top Opening Diameter	BxC-Lead Base Dimensions
Mini	Closed - 3-1/4" (0 - 82 mm)	Black or Grey EPDM, Silicone	RL051BA	Closed	16" x 19-1/4" (410 x 490 mm)
1	2-3/4" - 8" (69 - 203 mm)	Black or Grey EPDM, Silicone	RL101BA	2-3/4" (69 mm)	20" x 24" (508 x 609 mm)
2	8" - 11" (203 - 279 mm)	Black or Grey EPDM, Silicone	RL201BA	8" (203 mm)	26" x 30" (660 x 762 mm)
3	11" - 18-1/2" (279 - 469 mm)	Black or Grey EPDM, Silicone	RL301BA	11" (279 mm)	35" x 35" (889 x 889 mm)

Installation - Master Flash® Standard



1 Select an appropriate Master Flash® Standard with a pipe range that goes below and beyond fitting. If necessary, use the lines clearly shown on the flashing to trim an opening 20-30% smaller than pipe diameter.



2 Slide the Master Flash® down the pipe, using a non-petroleum-based lubricant to ease installation.



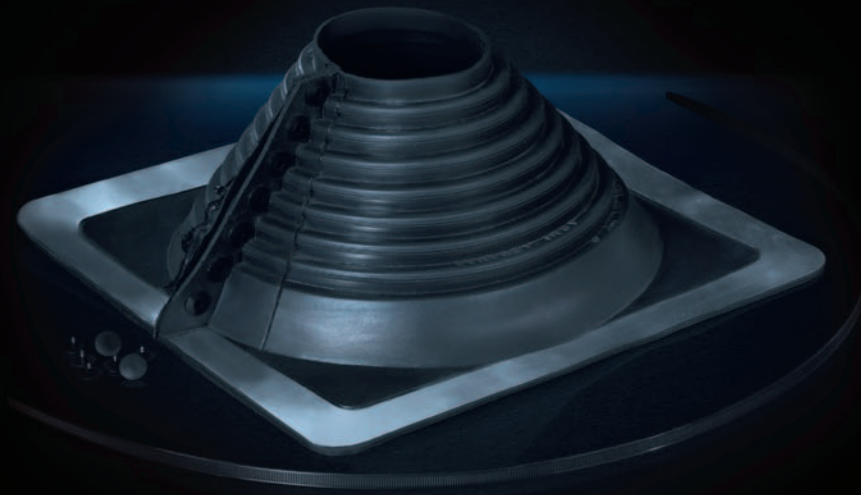
3 Press Master Flash® down, bending it to conform to roof profile or irregularities. A blunt tool will help to form flashing to tight roof angles.



4 Apply sealant between the base of the flashing and the roof.



5 Use fasteners to complete sealing. For a secure installation, fastener spacing must not exceed 1.5" (38 mm).



Aztec (UK) Ltd.

Unit 55, Enterprise Trading Estate
Hurst Lane, Pedmore Road, Brierley Hill
West Midlands, DY5 1TX, United Kingdom
tel: (+44) 1384 573444, fax: (+44) 1384 572029
e-mail: sales@aztecmaster-flash.co.uk
www.aztecmaster-flash.co.uk

In cooperation with:

Aztec Washer Company, Inc.

13821 Danielson Street, Poway,
CA 92064, 1-800-WASHER 5 (Outside Calif.), USA
tel: 1-858-513-4305, fax: 1-858-513-4305
www.aztecwasher.com

Other European affiliate:

Aztec International S.A.

ul. Bułgarska 63/65, 60-320 Poznań, Poland
tel: (+48) 61 867 60 84, fax: (+48) 61 867 34 44
e-mail: sales@aztec-international.eu
www.master-flash.eu
www.aztec-international.eu

Aztec International S.A.

- NEW PREMISES FROM 1st JANUARY 2020

ul. Sowia 13 C, 62-080 Tarnowo Podgórze, Poland
tel: (+48) 61 867 60 84, fax: (+48) 61 867 34 44
e-mail: sales@aztec-international.eu
www.master-flash.eu
www.aztec-international.eu